



# LISTENING GUIDE

## RAG'N'BONE MAN'S "HUMAN"

Meets National Core Arts Anchor Standards 1 and 7

### OBJECTIVES

- Generate and conceptualize artistic ideas and work (Cr1)
- Perceive and analyze artistic work (Re7)

### MATERIALS

- *Music Alive!* magazines (October 2017)
- *Music Alive!* Classroom Worksheets #5: Music Review Journal and #12: Staff Paper (download at [musicalive.com](http://musicalive.com))
- Computer or mobile device with Internet access

### START

Have your students read the Listening Guide on pages 18-19.

### DEVELOP

► **1. Play** "Human" by Rag'n'Bone Man (Hear the Music track 8 on [musicalive.com](http://musicalive.com)) a few times while your students follow along using the timeline. Then have them take a few minutes to fill out the Music Review Journal worksheet.

#### 2. Ask some questions:

- **What time signature is the piece in?** (4/4.)
- **Is the key signature major or minor?** (Minor—B minor.)
- **In the intro, do you hear chords directly stated—or implied?** (The i chord, B minor, is implied.)
- **What chord is implied when the vocals come in at 0:13?** (Still B minor.)
- **Harmonically speaking, what's different about the chorus?** (The chords are played by synthesized strings. A progression is introduced: VI [G]-iv [Em]-i [Bm].)
- **For how many measures are the G and Em chords played?** (One bar each.)

- **What's the shortest note value that the bass plays in the pre-chorus starting at 1:04?** (Sixteenth note.)

- **How would you describe the rhythm of the handclaps starting at 1:16?** (A steady rhythm of eighth notes.)

- **Are any new elements introduced when the track is stripped down at 1:30?** (No.)

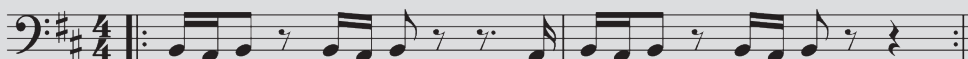
- **What is the new sound heard at 2:33?** (This is the first appearance of the III chord, D major.)

- **On what beat does the melisma at the end of the bridge start?** (The "and" of beat 2.)

- **When does the melisma end?** (Beat 1 of the following measure.)

- **What chord does the piece end on?** (The home chord, B minor.)

- **What is the last note of the vocal melody?** (B.)



### CLOSE

**Hand out copies of the staff paper worksheet** (or have your students use notation software). Have the students transcribe the two-bar repeating bass pattern that starts at the beginning of the recording (shown above in notation). Play the recording a few times, or play the bass line on the piano. Give them clues as needed: For example, tell them the starting pitch or some of the rhythms. When they're done, gather the manuscripts or files and check them for accuracy.

### ASSESS

**Did the students read the Listening Guide?**

**Did they listen to the song using the timeline and complete the Music Review Journal worksheets?**

**Did they answer the extra questions?**

**Did they transcribe the bass line?**

## October 2017 QUIZ ANSWERS

This month's quizzes are available at [musicalive.com/the-quiz-zone-october-2017](http://musicalive.com/the-quiz-zone-october-2017). Here are the quiz answers:

### THE ROAD TO BROADWAY

1. Choir
2. For girls: alto, soprano; for boys: bass, tenor
3. Dance class
4. Auditioning
5. False
6. Demi Singleton
7. Agent or manager
8. Private coach
9. True
10. *Hamilton*

### UKULELE TALES

1. False
2. Joao Fernandes
3. Jumping flea
4. Four
5. False
6. Arthur Godfrey
7. Guitar
8. Stephin Merritt and Zach Condon
9. Soprano, concert, tenor, and baritone
10. Baritones

### COVER STORY

1. Sisters
2. Alana, Danielle, and Este
3. keyboards/guitar/percussion (Alana), guitar (Danielle), bass (Este)
4. 2013
5. *Days Are Gone*
6. *Something to Tell You*
7. *Saturday Night Live*
8. False
9. Los Angeles
10. Fleetwood Mac and the Eagles